



# GMT MONTHLY MEMBERSHIP PROGRESS REPORT

Results as of: 8/31/2019

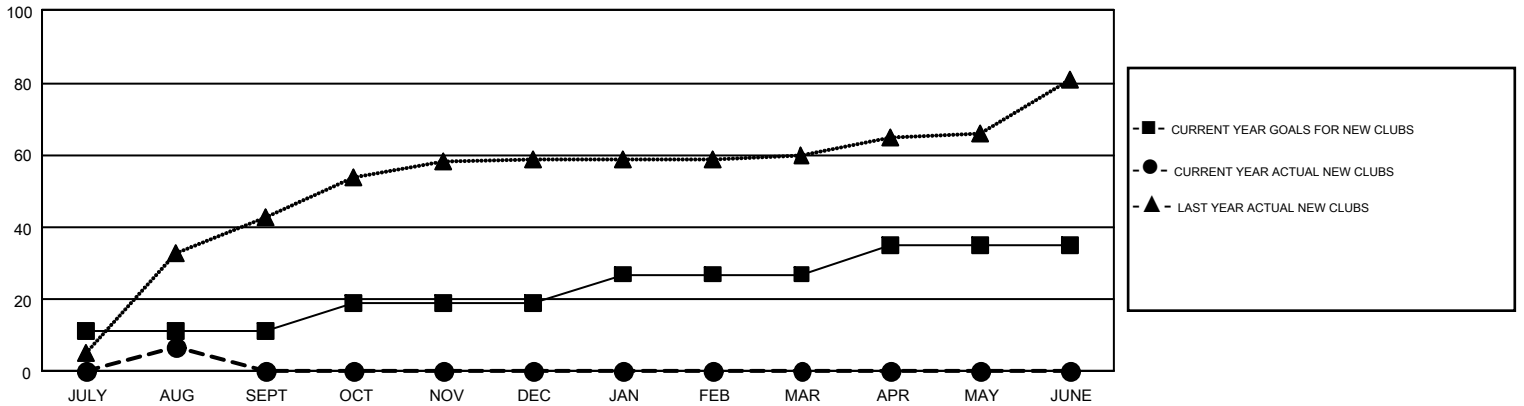
## GMT Constitutional Area 7, Group C

GMT: OPEN

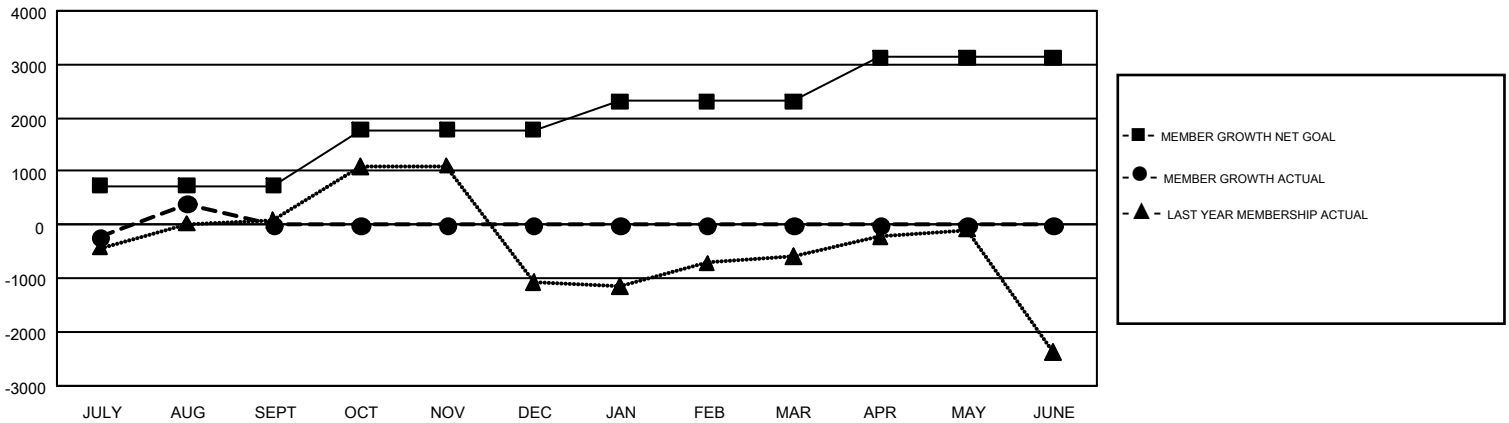
REPORT DOES NOT INCLUDE CLUBS IN UNDISTRICTED AREAS.

Clubs				Members			
RESULTS FOR 2019-2020				RESULTS FOR 2019-2020			
QUARTER	NEW CLUB GOAL	NEW CLUBS	DROPPED CLUBS	QUARTER	MEMBER GROWTH NET GOAL	MEMBER GROWTH ACTUAL	DROPPED MEMBERS ACTUAL (including transfers)
JULY/AUG/SEPT	11	7	20	JULY/AUG/SEPT	730	1,008	542
OCT/NOV/DEC	8	0	0	OCT/NOV/DEC	1050	0	0
JAN/FEB/MAR	8	0	0	JAN/FEB/MAR	530	0	0
APR/MAY/JUNE	8	0	0	APR/MAY/JUNE	820	0	0

GOALS AND ACTUAL NEW CLUBS CUMULATIVE



GOALS AND ACTUAL MEMBERS CUMULATIVE



DROPPED CLUBS: 20	189 CLUBS OF 659 ADDED 1 OR MORE NEW MEMBERS	<u>GENDER DISTRIBUTION</u>	
<u>DROPPED MEMBERS</u>		MALE	9,682 (48.89%)
DECEASED	10	FEMALE	10,122 (51.11%)
CLUB CANCELLED	0	TOTAL FAMILY UNIT MEMBERS 4,494	
OTHER	532	FAMILY MEMBERS PAYING HALF DUES 2,438	
TOTAL	542		

[CLICK HERE FOR CUMULATIVE MEMBERSHIP DATA](#)